

Cabergoline plus metformin therapy effects on menstrual irregularity and androgen system in polycystic ovary syndrome women with hyperprolactinemia

Azam Ghaneei¹ M.D., Akram Jowkar¹ M.D., Mohammad Reza Hasani Ghavam² M.D., Mohammad Ebrahim Ghaneei³ M.D.

1. Department of Endocrinology, Shahid Sadoughi Hospital, Shahid Sadoughi University of Medical Sciences, Yazd, Iran.
2. Shahid Sadoughi University of Medical Sciences, Yazd, Iran.
3. Khatam-Ol- Anbia Clinic, Yazd, Iran.

Corresponding Author:
Akram Jowkar. Department of Endocrinology, Shahid Sadoughi Hospital, Shahid Sadoughi University of Medical Sciences, Riazi Sq., Yazd, Iran.
Email: akjowkar@gmail.com
Tel: (+98) 9131548991

Received: 3 September 2014
Revised: 30 November 2014
Accepted: 17 December 2014

Abstract

Background: 30% of patients with polycystic ovary syndrome (PCOS) show mild, transient hyperprolactinemia. It is suggested that a reduction of the dopamine inhibitory effect might raise both prolactin and luteinizing hormone.

Objective: To investigate the adjuvant cabergoline therapy effects on menstrual irregularity and androgen system in PCOS women with hyperprolactinemia.

Materials and Methods: This randomized clinical trial was done on 110 polycystic ovary syndrome women with increased serum prolactin concentration [1.5 fold more than normal level (>37.5 ng/ml)]. Participants were divided into two groups: Case group (n=55) treated with metformin 1gr/day and cabergoline 0.5 mg/week for 4 months and control group (n=55) treated with metformin 1g/day and placebo weekly. Testosterone, prolactin, and dehydroepiandrosterone sulfate level were measured before and four months after intervention in two groups. Also, situation of menstrual cycles asked and recorded before and after intervention.

Results: We found decrease in the mean of dehydroepiandrosterone sulfate, weight and total testosterone level in the two groups after intervention but their changes were not significant. Patients in case group showed a significant decrease in serum prolactin level before and after intervention ($p<0.001$), but no difference was found in control group. All patients in both studied groups had irregular menstrual cycles, which regulate after intervention and the difference was significant ($p=0.02$).

Conclusion: The results showed that cabergoline can be used as a safe administration in PCOS patients with hyperprolactinemia to improve the menstrual cycles. Considering that the administration of cabergoline plus metformin may reduce the required duration and dose of metformin, patient acceptability of this approach is higher.

Key words: Polycystic ovarian syndrome, Cabergoline, Metformin, Menstrual cycle, Laboratory findings.

This article extracted from M.D. thesis. (Akram Jowkar)
Registration ID in IRCT: IRCT2014121420086N2

Introduction

Polycystic ovary syndrome (PCOS) is a common reproductive and endocrinopathy disorder that is the most common cause of an ovulatory infertility. It has a wide spectrum of clinical findings including: hyperandrogenemia, hyperinsulinemia, increasing luteinizing hormone (LH) secretion, menstrual irregularity, hirsutism, and infertility (1-10). According to the Rotterdam criteria PCOS is

characterized by a combination of oligo/amenorrhoea, clinical or endocrine signs of hyperandrogenemia and polycystic ovaries (11). PCOS involves ~5-10% of women in reproductive age which affect not only on their fertility but also on their health (6). In fact, menstrual irregularity exists in approximately all obese and 72% of thin PCOS patients. Although producing the oocyte is more in PCOS patients, but the produced oocytes have the lower quality which causes the infertility disorders and increases abortion rate

(12, 13). 30% of patients with PCOS show also modest rise in prolactin levels (14-17). Increasing of serum prolactin in these patients can be found in both follicular and luteal phase of the normal and stimulated cycles (18).

Prolactin is a secreted hormone by lactotrop cells of the anterior pituitary gland. Milk production, reducing reproductive and sexual function can induce as the effects of this hormone (19). Laboratory examination showed that the increase in prolactin can cause reduction in the ovulation and the number of ovarian follicles. These findings are resulting from the luteolytic function of this hormone, although, it's mechanism is not clear (20). In human, released dopamine by the hypothalamus is the most important inhibitor of prolactin secretion (21).

Although there are different ideas but studies have shown that central dopaminergic mechanisms are also effective on contribution of the gonadotropins and LH secretion. This reducing effect of dopaminergic mechanisms can cause abnormal secretion of prolactin and LH, this disorder in PCOS patients is seen with increased levels of prolactin (22, 23). Nowadays, Metformin (N, N-dimethylimidodicarbonimidic diamide) is used to control steroid related disorders and improve the menstrual irregularity and infertility in PCOS women (24, 25).

Cabergoline is a dopamine receptor agonist that its formula is $C_{26}H_{37}N_5O_2$. Cabergoline is more effective in patients with hyperprolactinemia in comparison with bromocriptin (26, 27). Cabergoline has higher affinity than dopamine D2 receptors and has the serum half-life of 43-hour limit. So this drug with such effects can be helpful in the treatment of hyperprolactinemia patients (28, 29). Few studies have been performed about using long-acting dopamine agonists with inhibiting of prolactin (cabergolin) in patients with PCOS (30, 31).

For example, Ajossa *et al* reported that chronic administration of cabergoline increases uterine perfusion in PCOS patients (28). Other study showed that cabergoline in PCOS patients can provide better ovarian response, reduced the risk of ovarian hyperstimulation syndrome (OHSS), and decreased serum prolactin concentration with no increase in pregnancy rate (29). Some researches indicate that the administration of cabergoline can normalize androgen levels and improve the menstrual irregularity in women with PCOS. They conclude that cabergoline by decreasing prolactin secretion can play a useful role in treatment of menstrual irregularities in PCOS patients (30-31).

This study was performed to investigate the effects of cabergoline therapy in addition to metformin (usual treatment) in PCOS patients on androgen system, hormone modification and menstrual irregularity.

Materials and methods

This randomized clinical trial was done on 110 PCOS women with increased serum prolactin concentration [1.5 fold more than normal level (>37.5 ng/ml)], who referred to endocrinology clinic of Khatamal Anbiaa Cilinic, Shahid Sadoughi University of Medical Sciences, Yazd, Iran. The study protocol was approved by the ethics committee of the Shahid Sadoughi University of Medical Sciences. Informed consent was obtained from all participants.

Our participants were selected from patients with clinical symptoms of PCOS such as hirsutism, obesity, menstrual irregularity (mainly oligomenorrea) based on the Androgen Excess Society standards (AES). All participants were examined for other causes of increased prolactin levels such as TSH test, pituitary magnetic resonance imaging (MRI) for detection of prolactinoma and other disorders or tumors that can

increase prolactin, and then women who had diagnosed as PCOS according to the latest AES standards enrolled in the study. Patients who had other endocrine disorders (such as thyroid disorders), history of cardiovascular disease, history of using the increasing prolactin drugs, women who wanted to be pregnant, and who couldn't tolerate the cabergoline were excluded from the study.

Demographic characteristics including age, history of drug usage, and the menstrual situation were asked. One fasting venous blood sample (5 ml) was taken from each participant. Serum testosterone, prolactin and dehydroepiandrosterone sulfate (DHEAS) level was measured with ELISA (enzyme-linked radio immune sorbent assay) method before treatment. Then, the patients were allocated into two groups by the table of random numbers: 1) oral administration of 1 gr/day metformin and 0.5 gr cabergoline weekly for 4 months as case group (n=55), and 2) oral administration of 1 gr/day metformin with placebo every week for 4 months as the control group (n=55). Testosterone, prolactin and DHEAS level were again measured four months after intervention in two groups. Also, situation of menstrual cycles was asked again and recorded.

Statistical analysis

Statistical analysis was carried out using SPSS software (Statistical Package for Social Sciences, version 18.0, SPSS Inc, Chicago, Illinois, USA) and chi-square, Mann-Whitney, Wilcoxon, and Student's *t* test were used to detect significant differences between two

groups. The level of significance was set at $p < 0.05$.

Results

In the present study 110 patients were studied into two groups of case (n=55) and control group (n=55) (Figure 1). One of the participants from case and four women from the control group were excluded of the study because of not referring. Finally, 54 patients in case group and 51 patients in the control group were analyzed. Both groups were matched in age and body mass index (BMI) (Table I). In our analysis, the mean of prolactin, DHEAS, and weight in case group before and after intervention were different significantly ($p < 0.001$). In control group, the mean of prolactin was not significantly different before and after intervention. But, there was statistically significant difference between mean of DHEAS and weight ($p < 0.001$). According to Wilcoxon test mean of testosterone in two groups before and after intervention was different significantly ($p = 0.04$) (Table II).

There were no statistically significant differences between two groups before and after intervention regarding to mean of DHEAS ($p = 0.09$), weight ($p = 0.73$), and level of testosterone ($p = 0.07$) changes. But the mean of prolactin changes was different significantly ($p < 0.001$) (Table III). All patients in both studied groups had irregular menstrual cycles, which regulate after intervention and the difference was significant. The rate of regulation after intervention in case group was 58.2% and in control group was 36.4% ($p = 0.02$) (Table IV).

Table I. Baseline characteristics in case and control groups

Variables	Case group	Control group	p-value
Age (year)	25.20 ± 4.8	25.16 ± 4.66	0.97*
BMI (kg/m ²)	29.70 ± 2.52	29.50 ± 2.54	0.66*
Testosterone (nmol/L)	1.02 ± 0.02	0.93 ± 0.15	0.009
DHEAS (µmol/L)	401.25 ± 12.57	410.72 ± 75.72	0.62*
Prolactin (IU/L)	41.98 ± 2.52	46.45 ± 35.99	0.36

DHEAS: Dehydroepiandrosterone Sulfate

Mann-Whitney test

*Student's *t* test

Table II. Comparison of prolactin, DHEAS, weight, and testosterone before and after intervention in case and control groups

Time	Prolactin		DHEAS		Weight		Testosterone	
	Case	Control	Case	Control	Case	Control	Case	Control
Before intervention	42.05 ± 6.11	46.96 ± 37.33	402.76 ± 121.18	411.88 ± 77.85	73.18 ± 7.64	72.64 ± 8.51	4.38 ± 24.94	2.26 ± 9.85
After intervention	7.11 ± 5.24	38.21 ± 8.06	231.68 ± 121.49	291.29 ± 109.42	72.2 ± 8.44	71.05 ± 9.12	2.06 ± 8.72	0.87 ± 0.22
p-value	<0.001*	0.08*	<0.001*	<0.001*	<0.001	<0.001	<0.001*	0.04*

Data presented as mean ± standard deviation

DHEAS: Dehydroepiandrosterone Sulfate

Paired-sample t test

*Wilcoxon test

Table III: Comparison of prolactin, DHEAS, weight, and testosterone changes in case and control groups before and after intervention

Groups	DHEAS	Weight	Testosterone	Prolactin
Case	171.08 ± 153.52	0.98 ± 2.72	2.32 ± 0.294	34.94 ± 7.70
Control	120.59 ± 116.22	1.59 ± 6.93	1.39 ± 0.26	8.75 ± 8.50
p-value	0.09*	0.73*	0.072*	<0.001*

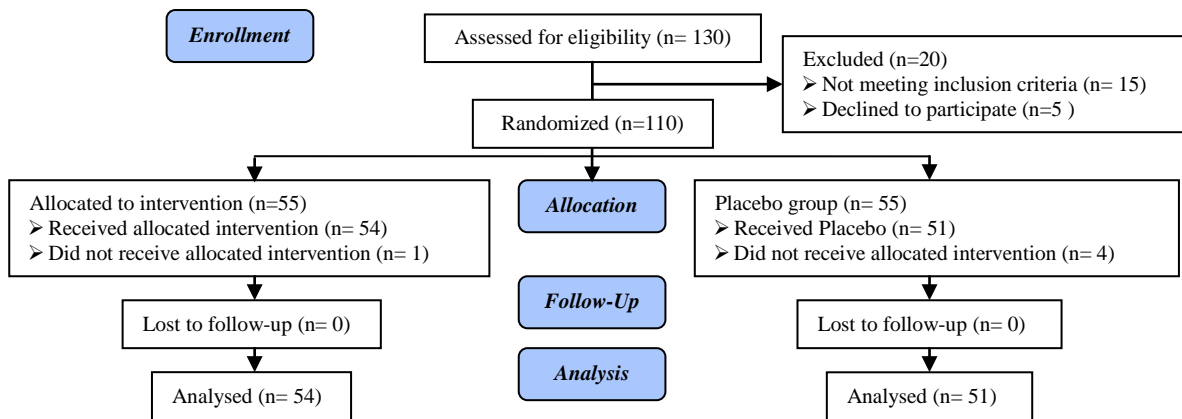
*mann-whitney test

Table IV: Menstrual irregularities in case and control groups

	Case group	Control group	p-value
Regular menstrual cycle	32 (58.2%)	19 (36.4%)	0.02
Irregular menstrual cycle	22 (41.8%)	32 (63.6%)	

Numbers are presented as number (%).

Chi-square test

**Figure 1.** Consort Flow Diagram

Discussion

This study was designed to evaluate the effect of cabergoline on menstrual irregularity and the level of serum androgens (testosterone, DHEAS and prolactin) in PCOS women with mild hyperprolactinemia. The mean of total testosterone, DHEAS, and weight in two groups after intervention were reduced significantly, but their changes were not different significantly. The mean of prolactin was reduced significantly in case group but was not significantly different before and after intervention.

Also, according to our results, the Use of cabergoline plus metformin was effective in

improving irregular menstrual cycles, by reducing the required duration and dose of metformin. Patient acceptability of this approach is higher and therefore it is more effective. Although, the mechanism is not clear, many authors have demonstrated an inhibiting role of dopamine and its' agonists on LH secretion and androgen concentration both in normal and hyperprolactinemia women. Dopamine agonist was proposed as a useful tool in the management of PCOS (26, 27).

But in our study, the androgen changes were not significantly difference in two groups. The results of Paoletti and colleagues showed that the use of cabergoline 0.5 mg/week for 4 months in the treatment of PCOS patients can

cause a decrease in the levels of LH and improve irregular menstrual cycles, but the recovery rate was not mentioned (30). Also, Prelevic *et al* showed that the compounds of L-DOPA and bromocriptin (dopamine agonist) in PCOS patients with hyperprolactinemia can cause a significant decrease in LH levels in comparison to the normoprolactinemia group (32). As a result, we expect to increase the number of ovulatory cycles and a regular menstrual cycle. This result was obtained in our study. Ajossa *et al* also found that PCOS patients have increased vascular resistance and the use of cabergoline causes a significant increase in uterine blood supply in PCOS patients (28). No similar study on combination of metformin therapy and cabergoline has been reported.

As expected, the mean of prolactin in the case group treated with metformin and cabergoline decreased after intervention, and the difference was significant before and after intervention. While in treated group by placebo and metformin there was no significant difference before and after intervention, which it is justified according to the effect of cabergoline in reducing the level of prolactin, as noted in the previous studies, such as Papaleo *et al* and Prelevic *et al* studies (29, 32). Prelevic *et al* showed a significant relation between basal levels of prolactin and the changes in prolactin level due to the inhibitory effect of bromocriptin and L DOPA. They suggested that the reduction in the inhibitory effect of dopamine in the hypothalamus can be a reason for inappropriate increased levels of LH and prolactin in PCOS patients with hyperprolactinemia (32).

In our study all of patients had menstrual irregularity, that in 58.2% of women treated with cabergoline and metformin and in 36.4% of metformin and placebo treated group the menstrual cycles became regular which this difference was significant in two groups. Kriplani *et al* surveyed 66 PCOS patients with

menstrual cyclicity which their irregularity improved after 6 month's treatment by metformin (33).

Also kedikvo *et al* reported that menstrual irregularity was improved by metformin therapy (850 mg twice a day) in PCOS patients, which in contrast to our results, the dose of metformin and duration of treatment were more (34). In addition, Prelevic *et al* detected that L DOPA compounds and bromocriptin in PCOS patients with hyperprolactinemia can cause a significant difference in their LH level, increase ovulation cycles, and finally regulate their menstrual cycles (32). Ajossa *et al* showed using cabergoline can increase the uterine perfusion in PCOS patients (28). These studies confirm our results, although a similar study which used the combination of metformin and cabergoline in PCOS patients was not found.

Finally, based on the evidence of dopamine agonists efficacy in reducing LH, prolactin, vascular resistance and increased uterine blood supply to the uterus, it can be concluded that the use of cabergoline with metformin, improve irregularity of menstrual cycles more than use of metformin alone. According to the results of mentioned studies, in PCOS patients for more effectiveness of metformin, we need to use higher dose and long term treatment, that many of these patients are not able to tolerate. Whereas by combination of metformin with cabergoline as a safe and weekly used drug, and also use lower dose of metformin we can reach our aim over a shorter time period.

In our study, the mean of testosterone before and after intervention was significantly different in both group, but testosterone changes was not significantly different between two groups. In similar study was done by Singh *et al* the mean of total testosterone before and after metformin therapy was not significantly different (35). Velija *et al* reported that treatment by metformin showed significant reduction in testosterone level in PCOS patients (36).

Also, Kazerooni *et al* in their study detected a significant difference in total testosterone level in PCOS patients (37). Results of other study showed that testosterone rate and DHEAS significantly reduced after treatment by dopamine agonists (38) which coordinated with our study.

In PCOS patients DHEAS level can be high which is seen in approximately 50% of patients without ovulation; adrenal is the source of this hormone (39). Banaszewska *et al* showed metformin therapy cause no significant different in DHEAS level in these patients, but cause a reduction in total testosterone (40). Similar results were also detected in another study by the same procedures (41). A similar study didn't find significant difference in DHEAS rate after treatment by metformin, which is not in correlation with our study (42). Also, Kenneth *et al* showed that using bromocriptin can cause significant difference in DHEAS and prolactin level in PCOS patients, and suggested that prolactin may be involved in producing adrenal androgens (43). Totally, results of our study and similar studies demonstrated that using dopamine agonists such as cabergoline have better effect on reducing DHEAS in comparison with using metformin alone (21, 43, 44).

Conclusion

Our results showed that cabergoline can be used as a safe administration in PCOS patients with mild hyperprolactinemia to improve the menstrual irregularity. Use of cabergoline plus metformin is effective in improving irregular menstrual cycles and may reduce the required duration and dose of metformin. Patient acceptability of this approach is higher and therefore it is more effective.

Acknowledgments

This study was supported by a grant from Shahid Sadoughi University of Medical Sciences. Authors wish to declare their

gratitude to Dr. Mohammadi and Mrs. Shamsi for their assistance.

Conflict of interest

All authors disclose no conflict of interest in this study.

References

1. Boomsma CM, Eijkemans MJC, Hughes EG, Visser GHA, Fauser BCJM, Macklon NS. A meta-analysis of pregnancy outcomes in women with polycystic ovary syndrome. *Human Reprod Update* 2006; 12: 673-683.
2. Stein IF, Leventhal ML. Amenorrhea associated with bilateral polycystic ovaries. *Am J Obstet Gynecol* 1935; 29: 181-191.
3. Franks S, Stark J, Hardy K. Follicle dynamics and anovulation in polycystic ovary syndrome. *Hum Reprod Update* 2008; 14: 367-378.
4. Knochenhauer ES, Key TJ, Kahsar-Miller M, Waggoner W, Boots LR, Azziz R. Prevalence of the polycystic ovary syndrome in unselected black and white women of the southeastern United States: a prospective study. *J Clin Endocrinol Metab* 1998; 83: 3078-3082.
5. Diamanti-Kandarakis E, Katsikis I, Piperi C, Kandaraki E, Piouka A, Papavassiliou AG, et al. Increased serum advanced glycation end-products is a distinct finding in lean women with polycystic ovary syndrome (PCOS). *Clin Endocrinol (Oxf)* 2008; 69: 634-641.
6. Asunción M, Calvo RM, San Millán JL, Sancho J, Avila S, Escobar-Morreale HF. A prospective study of the prevalence of the polycystic ovary syndrome in unselected Caucasian women from Spain. *J Clin Endocrinol Metab* 2000; 85: 2434-2438.
7. Azziz R. PCOS: a diagnostic challenge. *Reprod Biomed Online* 2004; 8: 644-648.
8. Wood JR, Dumesic DA, Abbott DH, Strauss JF. Molecular abnormalities in oocytes from women with polycystic ovary syndrome revealed by microarray analysis. *J Clin Endocrinol Metab* 2007; 92: 705-713.
9. Toulis KA, Gouli DG, Farmakiotis D, Georgopoulos NA, Katsikis I, Tarlatzis BC, et al. Adiponectin levels in women with polycystic ovary syndrome: a systematic review and a meta-analysis. *Hum Reprod Update* 2009; 15: 297-307.
10. Moran L, Teede H. Metabolic features of the reproductive phenotypes of polycystic ovary syndrome. *Hum Reprod Update* 2009; 15: 477-488.
11. Rotterdam ESHRE/ASRM- Sponsored PCOS consensus workshop group Hum Reprod. Review Revised 2003 consensus on diagnostic criteria and long-term health risks related to polycystic ovary syndrome (PCOS). *Hum Reprod* 2004; 19: 41-47.
12. Sengoku K, Tamate K, Takuma N, Yoshida T, Goishi K, Ishikawa M. The chromosomal normality of unfertilized oocytes from patients with polycystic ovarian syndrome. *Hum Reprod* 1997; 12: 474-477.
13. Boomsma CM, Fauser BCJM, Macklon NS. Pregnancy complications in women with polycystic

- ovary syndrome. *Semin Reprod Med* 2008; 26: 72-84.
14. Duignam NM. Polycystic ovarian disease. *Br J Obstet Gynaecol* 1976; 83: 593.
 15. Falaschi P, Frajese G, Rocco A, Toscano V, Sciarra F. Polycystic ovary syndrome and hyperprolactinemia. *J Steroid Biochem* 1977; 8: 13.
 16. Coremlum B, Taylor PJ. The hyperprolactinemic polycystic ovary syndrome may not be an distinct entity. *Fertil Steril* 1982; 38: 549-552.
 17. Işık AZ, Güleklı B, Zorlu CG, Ergin T, Gökmen O. Endocrinological and clinical analysis of hyperprolactinemic patients with and without ultrasonically diagnosed polycystic ovarian changes. *Gynecol Obstet Invest* 1997; 43: 183-185.
 18. Doldi N, Papaleo E, De Santis L, Ferrari A. Hyperprolactinemia in IVF cycles: treatment vs no treatment and outcome of ovarian stimulation, oocyte retrieval and oocyte quality. *Gynecol Endocrinol* 2000; 14: 437-441.
 19. Longo D, Fauci A, Kasper D, Hauser S, Jameson J, Loscalzo J, Harrison's Principles of Internal Medicine. 18th Ed. USA, Elsevier; 2011.
 20. Webster J. Dopamine agonist in hyperprolactinemia. *J Reprod Med* 1999; 44: 1105-1110.
 21. Falaschi P, Rocco A, Del Pozo E. Inhibitory effect of bromocriptine treatment on luteinizing hormone secretion in polycystic ovary syndrome. *J Clin Endocrinol Metab* 1986; 62: 348-351.
 22. Prelevic GM, Wurzburger MI, Peric LJA. Acute effects of L-dopa and bromocriptine on serum PRL, LH and FSH levels in patients with hyperprolactinemic and normoprolactinemic polycystic ovary syndrome. *J Endocrinol Invest* 1987; 10: 389-395.
 23. Moran LJ, Noakes M, Clifton PM, Tomlinson L, Norman RJ. Dietary composition in restoring reproductive and metabolic physiology in overweight women with polycystic ovary syndrome. *J Clin Endocrinol Metab* 2003; 88: 812-819.
 24. Hoeger K. Obesity and weight loss in polycystic ovary syndrome. *Obstet Gynecol Clin North Am* 2001; 28: 85-87.
 25. Casanueva FF, Molitch ME, Schlechte JA, Abs R, Bonert V, Bronstein MD, Brue T, et al. A 2006 Guidelines of the Pituitary Society for the diagnosis and management of prolactinomas. *Clin Endocrinol (Oxf)* 2006; 65: 265-273.
 26. Webster J, Piscitelli G, Polli A, Ferrari CI, Ismail I, Scanlon MF. A comparison of cabergoline and bromocriptine in the treatment of hyperprolactinemic amenorrhea. *N Engl J Med* 1994; 331: 904-909.
 27. Pascal-Vigneron V, Weryha G, Bosc M, and Leclere J. Hyperprolactinemic amenorrhea: treatment with cabergoline versus bromocriptine. Results of a national multicenter randomized double-blind study. *Presse medicale (Paris, France)* 1995; 24: 753-757.
 28. Ajossa S, Paoletti AM, Guerriero S, Floris S, Mannias M, Melis GB. Effect of chronic administration of cabergoline on uterine perfusion in women with polycystic ovary syndrome. *Fertil Steril* 1999; 71: 314-318.
 29. Papaleo E, Doldi N, De Santis L, Marelli G, Marsiglio E, Rofena S, et al. Cabergoline influences ovarian stimulation in hyperprolactinaemic patients with polycystic ovary syndrome. *Hum Reprod* 2001; 16: 2263-2266.
 30. Paoletti AM, Cagnacci A, Depau GF, Orrù M, Ajossa S, Melis GB. The chronic administration of cabergoline normalizes androgen secretion and improves menstrual cyclicity in women with polycystic ovary syndrome. *Fertil Steril* 1996; 66: 527-532.
 31. Gómez R, Ferrero H, Delgado-Rosas F, Gaytan M, Morales C, Zimmermann RC, et al. Evidences for the existence of a low dopaminergic tone in polycystic ovarian syndrome: implications for OHSS development and treatment. *J Clin Endocrinol Metab* 2011; 96: 2484-2492.
 32. Prelevic GM, Wurzburger MI, Peric LJA. Acute effects of L-dopa and bromocriptine on serum PRL, LH and FSH levels in patients with hyperprolactinemic and normoprolactinemic polycystic ovary syndrome. *J Endocrinol Invest* 1987; 10: 389-395.
 33. Kriplani A, Agarwal N. Effects of metformin on clinical and biochemical parameters in polycystic ovary syndrome. *J Reprod Med* 2004; 49: 361-367.
 34. Kedikova S, Sirakov M, Boyadzhieva M. [Metformin efficiency for the adolescent PCOS treatment]. *Akush Ginekol (Sofia)*. 2012; 51: 6-10. (In Bulgarian)
 35. Singh B, Panda S, Nanda R, Pati S, Mangaraj M, Sahu PK, et al. Effect of Metformin on Hormonal and Biochemical Profile in PCOS Before and After Therapy. *Indian J Clin Biochem* 2010; 25: 367-70.
 36. Velija-Ašimi Z. Evaluation of endocrine changes in women with the polycystic ovary syndrome during metformin treatment. *Bosn J Basic Med Sci* 2013; 13: 180-5.
 37. Kazerooni T, Dehghan-Kooshkghazi M. Effects of metformin therapy on hyperandrogenism in women with polycystic ovarian syndrome. *Gynecol Endocrinol* 2003; 17: 51-56.
 38. Chapman AJ, Wilson MD, Obhrai M, Sawers RS, Lynch SS, Royston JP, et al. Effect of bromocriptine on LH pulsatility in the polycystic ovary syndrome. *Clin Endocrinol (Oxf)* 1987; 27: 571-580.
 39. Shlomo M, Kenneth SP, Reed L, Henry MK. Williams textbook of Endocrinology. 12th Ed. USA, Saunders/Elsevier; 2011.
 40. Banaszewska B, Pawelczyk L, Spaczynski RZ, Duleba AJ. Effects of simvastatin and metformin on polycystic ovary syndrome after six months of treatment. *J Clin Endocrinol Metab* 2011; 96: 3493-3501.
 41. Banaszewska B, Pawelczyk L, Spaczynski RZ, Duleba AJ. Comparison of simvastatin and metformin in treatment of polycystic ovary syndrome: prospective randomized trial. *J Clin Endocrinol Metab* 2009; 94: 4938-4945.
 42. Otta CF, Wior M, Iraci GS, Kaplan R, Torres D, Gaido MI, et al. Clinical, metabolic, and endocrine parameters in response to metformin and lifestyle intervention in women with polycystic ovary syndrome: a randomized, double-blind, and placebo control trial. *Gynecol Endocrinol* 2010; 26: 173-178.
 43. Kenneth A, Steingold, Rogerio A, Lobo, Howard L, Judd, John KH, LU R, Jeffrey C. The Effect of

44. Bromocriptine on Gonadotropin and Steroid Secretion in Polycystic Ovarian Disease. *J Clin Endocrinol Metab* 1986; 62: 1048-1051.
45. The Rotterdam ESHRE/ ASRM- Sposored pcos

consensus workshop group 2004 revised 2003consensuson diagnostic criteria and long term health risks related to polycystic ovary syndrome (pcos). *Hum Repord* 2004; 19: 41-47.